



v 1.0

November 17th 2019

I. Overview

DCLeap is a Windows application, running in background, to control the movements and events of the mouse and the achievement of specific actions related to the gestures of the hands, all in a virtual reality environment.

Although developed for DCS World, mouse operation with DCSLeap remains usable for any other application, whether VR or desktop. However, gestural interactions are confined to an operation within DCS World.

DCLeap is not compatible with Oculus and PiMAX devices.

1) DCLeap software and hardware

DCLeap is composed of :

- Mouse movement management module ;
- Module for managing events linked to the mouse (right and left clicks);
- Module for detecting interactions in the context of hand gestures.

DCLeap was developed in C # with Unity and uses the following solutions :

- Win32 C# mouse ;
- InputSimulatorPlus by TChatzigiannakis ;
- LeapMotion Core SDK for Unity ;
- LeapMotion Interaction engine for Unity ;
- OVR Lay by BenOtter.

The prerequisites of DCSLeap are:

- Virtual reality HMD ;
- Headmounted LeapMotion device ;
- DCS World ;
- SteamVR, beta or stable ;
- Drivers CBuchner *driverleap* (https://github.com/cbuchner1/driver_leap) ;
- Drivers SDraw *driverleap* (https://github.com/SDraw/driver_leap)

2) Installation

Starting from the premise that DCS World, SteamVR and the two "driverleap" are already installed, unzip the DCSLeap.7z archive to the location of your choice. Then, open DCSLeap.exe.

At first use, it is necessary to enter the resolution of a single screen of your VR headset, for example:

- WMR :1440 x 1440 ;
- HP Reverb : 2160 x 2160 ;
- HTC Vive Pro : 1440 x 1600.

Once filled in, click "Save Settings" button.

It is imperative to perform this step because DCSLeap will recover two registry keys containing the specified resolutions in order to generate the cursor movements.

This registration in the registry is the only entry generated outside the folder in which you unpacked DCSLeap.

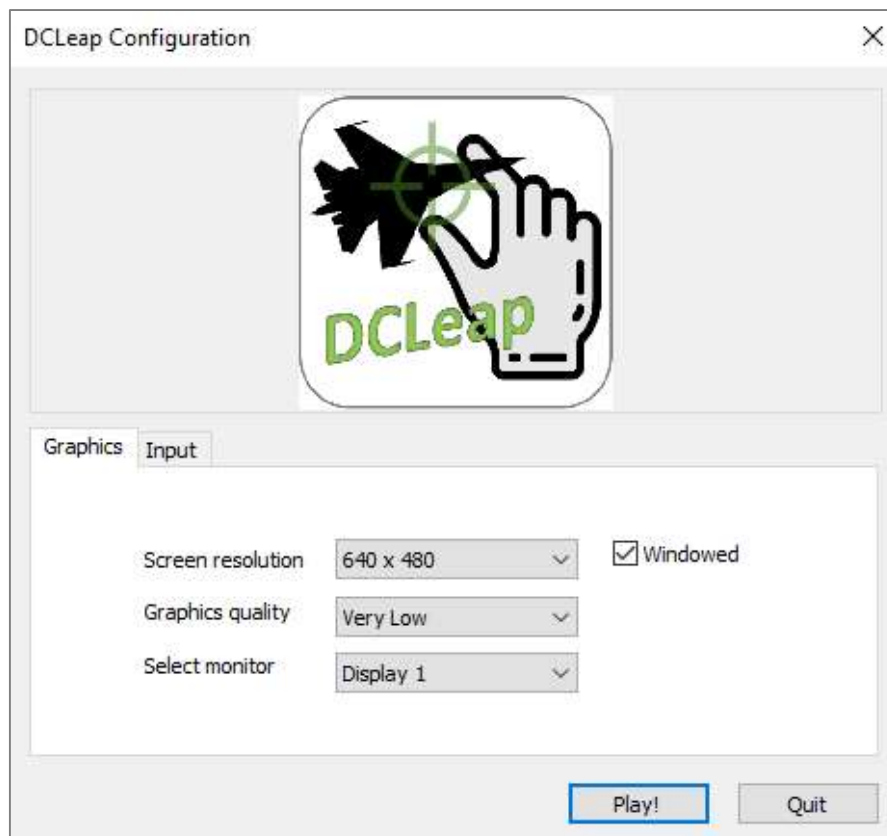
These registry keys are under:\Computer\HKEY_CURRENT_USER\Software\Leap4DCS\DCSLeap

Name	Type	Data
(Default)	REG_SZ	(value not set)
__Input Key Alt NegOpenMenu_h2868607670	REG_BINARY	00
__Input Key Alt PosOpenMenu_h4029173622	REG_BINARY	00
__Input Key NegOpenMenu_h4131625295	REG_BINARY	00
__Input Key PosOpenMenu_h1549472783	REG_BINARY	65 73 63 61 70 65 00
AutoStart_h792615882	REG_DWORD	0x00000001 (1)
CatAlign_h3487352286	REG_DWORD	0x00000001 (1)
CatShoot_h3461268828	REG_DWORD	0x00000001 (1)
DebugMouse_h2609677301	REG_DWORD	0x00000000 (0)
DebugText_h859165769	REG_DWORD	0x00000001 (1)
Ejection_h3661236176	REG_DWORD	0x00000001 (1)
HMD_height_h2445020708	REG_DWORD	0x000005a0 (1440)
HMD_width_h2275536957	REG_DWORD	0x000005a0 (1440)
IndexClick_h3497765653	REG_DWORD	0x00000001 (1)
Knob sensitivity_h1484211232	REG_DWORD	(invalid DWORD (32-bit) value)
Pinch sensitivity_h2584366580	REG_DWORD	(invalid DWORD (32-bit) value)
PinchClick_h1526965239	REG_DWORD	0x00000001 (1)
Recenter_h683906425	REG_DWORD	0x00000001 (1)
RemoveChocks_h2374671964	REG_DWORD	0x00000001 (1)
Screenmanager Fullscreen mode_h3630240806	REG_DWORD	0x00000003 (3)
Screenmanager Resolution Height_h2627697771	REG_DWORD	0x000001e0 (480)
Screenmanager Resolution Use Native_h1405027...	REG_DWORD	0x00000000 (0)
Screenmanager Resolution Width_h182942802	REG_DWORD	0x00000280 (640)
unity.cloud_userid_h2665564582	REG_BINARY	62 31 66 31 35 37 39 31 31 66 34 61 37 35 34 63 39...
unity.player_session_count_h922449978	REG_BINARY	39 39 00
unity.player_sessionid_h1351336811	REG_BINARY	39 39 38 35 38 31 38 36 32 36 34 37 36 33 36 30 34 38...
UnityGraphicsQuality_h1669003810	REG_DWORD	0x00000000 (0)
UnitySelectMonitor_h17969598	REG_DWORD	0x00000000 (0)
XSensitivity_h3380076496	REG_DWORD	(invalid DWORD (32-bit) value)
YSensitivity_h1047594289	REG_DWORD	(invalid DWORD (32-bit) value)

Check the creation of these keys by launching Regedit via the Windows command prompt (Win + R key).

If the keys are generated correctly and the associated values are correct, run the DCLeap.exe executable.

Normally, the entered values should be italicized in the input fields. You should see the Unity window below, make sure the windowed mode is enabled, and then click "Play! ".

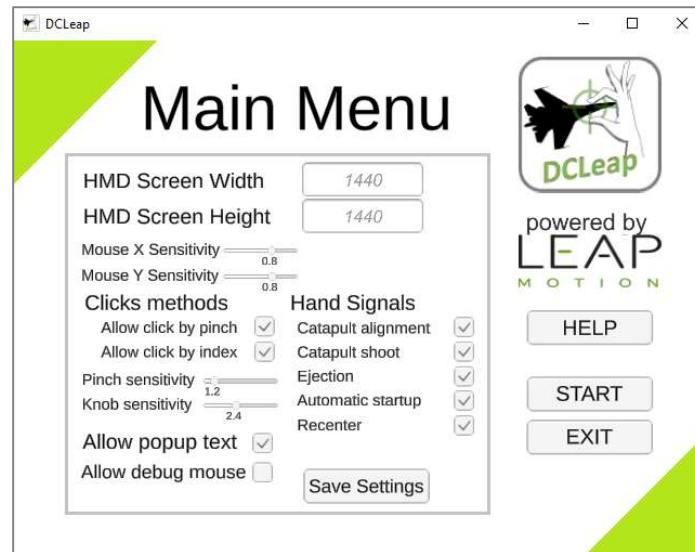


II. Usage

1) Main Menu

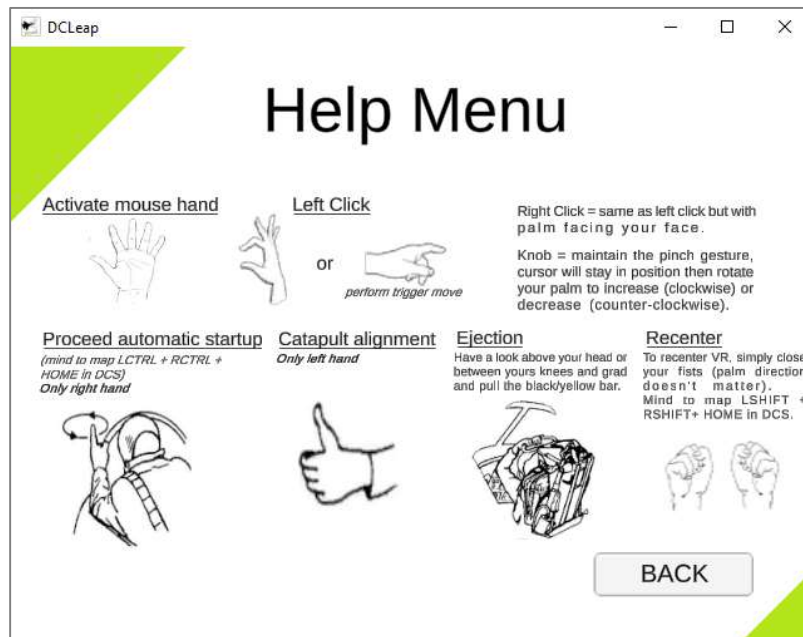
When DCLeap is launched, you will access this window, Main Menu, where you can ;

- Enable the gesture recognition feature ;
- Allow hand signals;
- Allow texts popup ;
- Define click method by allowing pinch and/or index trigger gesture;
- Define the sensitivity of the pinch gesture ;
- Define the knob sensitivity;
- Define mouse sensitivity ;



2) Help Menu

From this window you can access help reminding the different gestures implanted.



3) Start Button

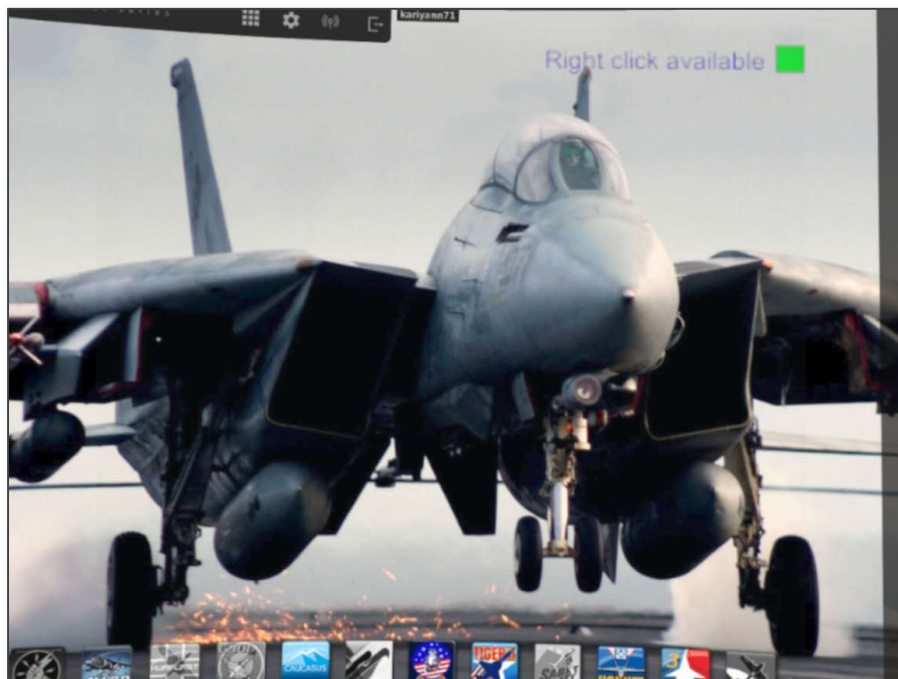
Once you have pressed the Start button, you should see two red and green squares appearing in your RV headset, indicating the activation of the virtual mouse.



Figure 1 – From left to right - both hands move the mouse, only the left hand, only the right

The red square indicates that the mouse control is slave to the hand, left, the green square indicates that the control is slaved to the right hand. In order to avoid any disruption related to activation of both hands tracking, it is best to assign mouse tracking to one hand at a time.

DCLeap will tell you when right click is available as shown under.



a. Catapult shoot

DCLeap allow you to execute catapult shoot with the salute gesture. Currently this action is mapped to LShift + U.

When you execute “Salute” you will see “Catapult Shoot !” in red letters on top right of your HMD (if Allow debug text is ticked in the Main Menu).



b. Catapult alignment

You can align your aircraft to catapult (Keyboard U) with Thumb up gesture. As for catapult shoot, you will see “Catapult Align” in red letters (if Allow debug text is ticked in the Main Menu).

c. Start-Up

You can execute an automatic start-up procedure by pointing right index finger vertically and gently circling your hand (index must point to the sky for 2 seconds). Mind to map LCTRL + RCTRL + HOME as keybind for automatic Start-up command for your favourite aircraft (this can be done by performing fists closed gesture).

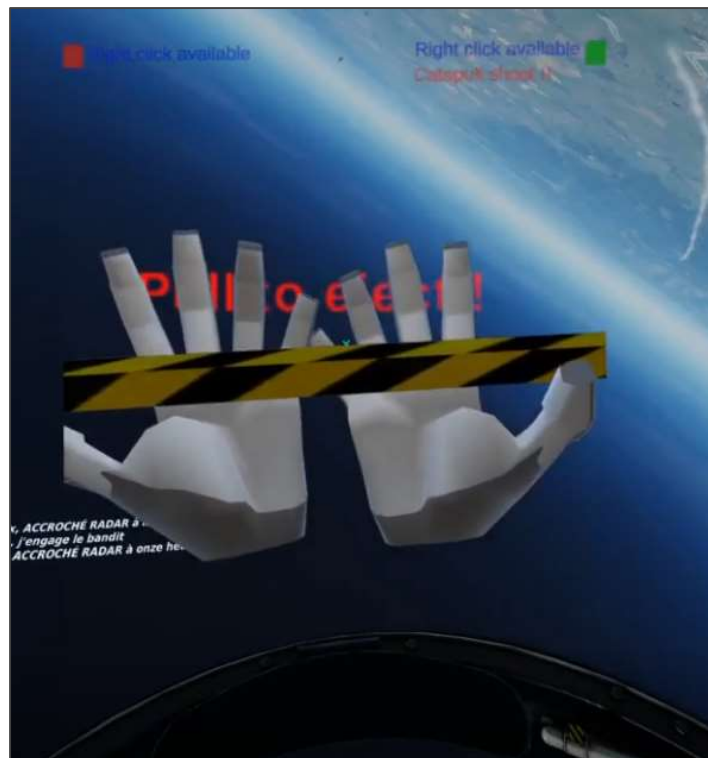
d. Recenter VR view

You can execute a VR recenter view by closing both fists, palms directions don't matter. Mind to map LSHIFT + RSHIFT + HOME (this can be done by performing fists closed gesture).

e. Ejection

You can call ejection command by grabbing one of the two handlebars over your head or between your knees. When your hands will be close the handle, they will be shown in order to help you to grab the handle.

When grabbed, you'll have 1 seconds to revert before DCLeap will execute ejection's command.



4) Quit

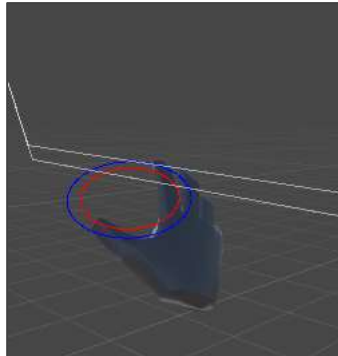
To exit the application, press the LCTRL + Escape keys. Then click on the "Quit" button in the main menu.

Other, DCLeap automatically quit when SteamVR is shutdown.

III. To go further

1) Pinch gesture

Here is the illustration under Unity of the pinch gesture zone (the red one) and the release pinch zone (the blue one).



2) Palm facing zone

When the white line (line between the HMD and the palm) enter in the red cone, LeapMotion detect your hand is facing your head. Currently the red cone is set at 45°.

